



**TURTLE PLASTICS®**  
Safety & Stabilization Product Solutions



(p) 1-800-756-6635  
(f) 1-800-437-1603



turtleplastics.com



7400 Industrial Parkway Dr.  
Lorain, Ohio 44053



orders@turtleplastics.com

ALL TURTLE PLASTICS' PRODUCTS  
**MADE IN USA**



## OUR MOST POPULAR "RESCUE-READY" KITS



### Crib Toter Kit Mfg. Part #: CT44PL-18

Keeps the Hybrid Crib® blocks organized and easier to carry. Blocks and Crib Toter bags are washable and ergonomically designed. Ideal for storage in compact spaces.

- (18) 44PL-18 Hybrid Crib®
- (2) Nylon Toter Bags

Working Load of Each 44PL-18  
Cribbing Block =  
20,500kg/45,194lbs



### Quick Response Kit Mfg. Part #: QR-2 Kit

Basic, rapid response stabilization tool kit for first responders. Can be stored in trunk, pickup truck, or fire apparatus. All components fit neatly inside the carrying bag.

- (2) SC-1 Standard Step Chock
- (2) 3W Stepped Wedge
- (2) 2B Turtle Lock Block/Blox®
- (1) WC-2 Double Wheel Chock
- (1) Carrying Bag 25" x 15" x 16"



### Auto X Kit B Mfg. Part #: Auto X Kit B

There are many available configurations of Dura Crib/Dura Sta brand products in kit form for first responders. The Auto X-B kit contains our most popular products. This kit is portable and rescue ready for deployment.

- (12) 24-18 Crib®
- (4) 2/4-12 Wedges
- (18) 44PL-18 Hybrid Crib®
- (2) 4/4-20 Wedges
- (2) 3W Stepped Wedges
- (2) 6W Stepped Wedges
- (1) 2B Turtle Lock Block/Blox®
- (1) 3B Turtle Lock Block/Blox®
- (2) SC-1 Standard Step Chocks
- (2) WC-2 Double Wheel Chocks
- (1) CTP1818-1.5 ModPad®\*

Carrying Bags and Crib Toter bags not included but may be purchased separately.

## OUR MISSION

For over 40 years, Turtle Plastics has been manufacturing safety stabilization products and matting. All our products are made in the USA. Our mission is to help organizations protect the health and safety of its workforce while increasing sustainability, as well as reducing negative environmental impact by creating meaningful products from 100% recycled plastic. Please check with your authorized distributor of our products for more great products. Please note product part numbers shown on this line card may vary depending on your distributor.



**HYBRID CRIB®**  
Mfg. Part #: 44PL-18

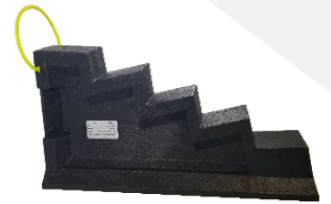
- Dimensions: 4"x4"x18"
- A versatile light duty plastic cribbing block designed with two working faces, either pyramid sides or "Lincoln Log" for rapid stacking of smaller to mid-sized surface areas such as cars and small equipment.
- Available as a kit with 18 cribs (Mfg. Part #: CT44PL-18).
- Working Load: 20,500kg/45,194lbs



**A Safer and Cleaner Alternative to Wood.**

***Why put dirty wood back onto your apparatus?***

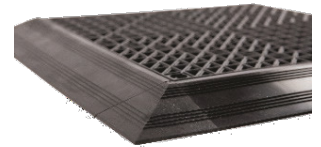
All Turtle Plastics' products are ergonomically designed, **washable**, can be **decontaminated** and are made in the USA from quality recycled plastic that is odor free. All Dura Crib® interlocking blocks, chocks and pads are load rated. Year over year reliable and repeatable performance of the products makes them the environmental, health and safety choice over wood cribbing.



**SC-1 STANDARD STEP CHOCK**  
Mfg. Part #: SC-1

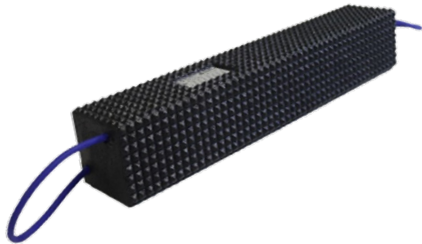
Dimensions: Base-24 1/2"x 5 3/4", W-3 3/4"x H-10 3/4"

- The fastest way to stabilize and to ensure stability.
- Working Load: 2,600kg/5,732lbs



**TURTLE TILE™**  
Mfg. Part #: 1212

The Turtle Tile has become the gold standard for matting by industry leaders, including OEM fire/rescue apparatus manufacturers. All Turtle Tile are 12"x12". They are available in 3/4" or 1/2" thickness. These tiles are the perfect compartment matting solution as they interlock, can be easily cut, are odor free, scrunch-free, impervious to most industrial chemicals and most importantly, they can be decontaminated. Available in black, red, blue, or gray.



**SUPER BLACK DIAMOND CRIB™**  
Mfg. Part #:44HDC-24

- Dimensions: 4"x4"x24"
- Medium duty capability.
- Four-sided pyramid design creates rapid deployment of lock and ready to stack.
- Working Load: 40,000kg/90,000lbs
- Pat. Pending



**Black Diamond Crib-18™**  
Mfg. Part #: 44HDC-18

- Dimensions: 4"x4"x18"
- Versatile and strong
- Four-sided pyramid design creates rapid deployment of lock and ready to stack.
- Working Load: 31,751kg/70,000lbs
- Pat. Pending

**SUPER BLACK DIAMOND CRIB XL™**  
Mfg. Part #:44HDC-36

- Dimensions: 4"x4"x36"
- Ideal for heavy rescue & extrication.
- Four-sided pyramid design creates rapid deployment of lock and ready to stack.
- Working Load: 69,400kg/153,000lbs
- Pat. Pending.



**COG STEPCHOCK COMBO**  
Mfg. Part #: COG

- Wedge and incline lock together for maximum stability.
- Flip and it's a standard step chock – quick set up and leveling.
- Compatible with Turtle Lock Block to increase base lift.
- Working Load:  
Chock 1,701kg/ Without Cog 2,722kg  
Chock 3,750lbs/ With Cog 6,000lbs

