



TURTLE PLASTICS®
Safety & Stabilization Product Solutions



(p) 1-800-756-6635
(f) 1-800-437-1603



turtleplastics.com



7400 Industrial Parkway Dr.
Lorain, Ohio 44053



orders@turtleplastics.com

ALL TURTLE PLASTICS' PRODUCTS
MADE IN USA



OUR MOST POPULAR "RESCUE-READY" KITS

New for 2024

QR-2 , BASK and Auto X Carry Bags are Black



Crib Toter Kit **Mfg. Part #: CT44PL-18**

Keeps the Hybrid Crib® blocks organized and easier to carry. Blocks and Crib Toter bags are washable and ergonomically designed. Ideal for storage in compact spaces.

- (18) 44PL-18 Hybrid Crib®
- (2) Nylon Toter Bags

Working Load of Each 44PL-18
Cribbing Block =
20,500kg/45,194lbs



Quick Response Kit **Mfg. Part #: QR-2 Kit**

Basic, rapid response stabilization tool kit for first responders. Can be stored in trunk, pickup truck, or fire apparatus. All components fit neatly inside the carrying bag.

- (2) SC-1 Standard Step Chock
- (2) 3W Stepped Wedge
- (2) 1B Turtle Lock Block/Blox®
- (1) 2B Turtle Lock Block/Blox®
- (1) WC-2 Double Wheel Chock
- (1) Carrying Bag 25" x 15" x 16"



Auto X Kit B **Mfg. Part #: Auto X Kit B** **Engine Kits**

There are many available configurations of Dura Crib®/Dura Stat® brand products in kit form for first responders. The Auto X-B kit contains our most popular products. This kit is portable and rescue ready for deployment.

- (12) 24-18 Crib®
- (4) 2/4-12 Wedge
- (18) 44PL-18 Hybrid Crib®
- (2) 4/4-20 Wedge
- (2) 3W Stepped Wedge
- (2) 6W Stepped Wedge
- (1) 1B Turtle Lock Block/Blox®
- (1) 2B Turtle Lock Block/Blox®
- (1) 3B Turtle Lock Block/Blox®
- (2) SC-1 Standard Step Chock
- (2) WC-2 Double Wheel Chock
- (1) CTP1818-1.5 ModPad®

*Carrying Bags and Crib Toter bags not included but may be purchased separately.

OUR MISSION

For over 40 years, Turtle Plastics has been manufacturing safety stabilization products and matting. All our products are made in the USA. Our mission is to help organizations protect the health and safety of its workforce while increasing sustainability, as well as reducing negative environmental impact by creating meaningful products from 100% recycled plastic. Please check with your authorized distributor of our products for more great products. Please note product part numbers shown on this line card may vary depending on your distributor.

Popular Products



THE SLAB®

Mfg. Part #S612-24

- Dimensions: 6"x12"x24"
- Working Load: 110,000kg/242,508lbs



BLACK DIAMOND CRIB®

Mfg. Part #67HDC-30

- Dimensions: 6"x7"x30"
- Working Load: 71,600kg/157,850lbs



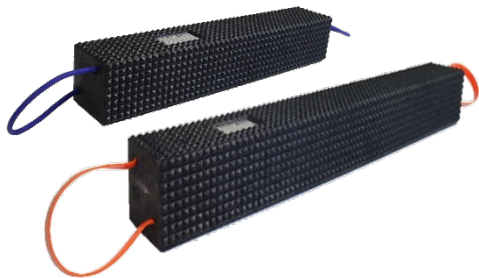
PRIME CRIB®

Mfg. Part # 67PC-24

- Dimensions: 6"x7"x24"
- Working Load: 58,000kg/129,631lbs



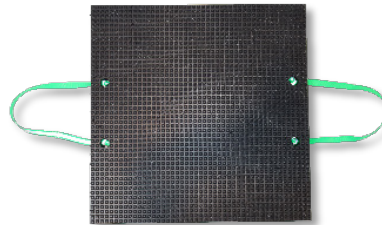
Introducing for 2024 to the Black Diamond Crib Block Family, these versatile blocks with four sided facades that interlock with many of the other Dura Crib brand blocks for rapid deployment.



SUPER BLACK DIAMOND CRIB™

Mfg. Part #:44HDC-24

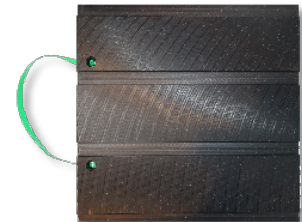
- Dimensions: 4"x4"x24"
- Working Load: 40,000kg/90,000lbs
- Pat. Pending



SLAB PAD TWO

Mfg. Part # SP24-2

- Dimensions: 2"x24"x24"
- PSI: 3,000



PRIME CRIB STACK PAD

Mfg. Part # PCP24

- Dimensions: 2"x 24"x 24"
- PSI: 3,000

SUPER BLACK DIAMOND CRIB XL™

Mfg. Part #:44HDC-36

- Dimensions: 4"x4"x36"
- Working Load: 69,400kg/153,000lbs
- Pat. Pending.



FORKLIFT BLOCKING KIT

Mfg. Part #FBK



MAINTENANCE BAY SERVICE KIT

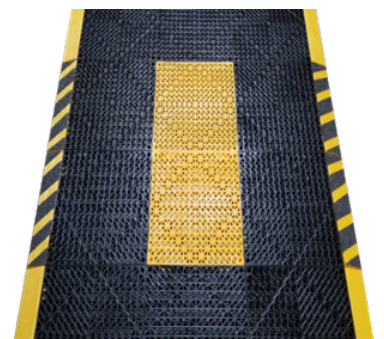
Mfg. Part # MBS KIT

Comprehensive kits for industrial equipment technicians maintaining or repairing material handling trucks or who work at industrial plants or shops that use forklifts, tugs and/or small machinery.

Turtle Tile™ - Open or Solid Surface Matting Solution

Mfg. Part #1212 (Open Grid shown) with AF/AM Ramps

- Dimensions: 12"x12"x (3/4", 1/2" or 1")
- Five available colors.
- Matching or coordinating ramps.
- Tiles and ramps easily interlock with two-tab design.
- Ergonomically designed for workforce comfort.



Fire & Safety Kits

2024 Engine/Rescue Equipment Kits

7400 Industrial Parkway Drive Lorain, OH 44053

(800) 756-6635

orders@turtleplastics.com

Photo	Component	Description	Part # Auto X Kit A	Part # Auto X Kit B	Part # Auto X Kit C	Part # Auto X Kit D	Part # Auto X Kit E
	24-18 CRIB	2"x4"x18" Pyramid Crib®	6	12	12	12	24
	2/4-12	2"x4"x12" Wedge	2	4	4	4	8
	44PL-18	4"x4"x18" Hybrid Crib®	9	18	36	36	36
	4/4-20	4"x4"x20" Wedge	2	2	8	8	4
	67SC-24	6"x7"x24" Super Crib®			8	8	18
	6/7-24	6"x7"x24" Super Wedge			2	4	4
	3W	3" W x 8 1/2" Long Wedge	1	2	2	4	4
	6W	6" W x 8 1/2" Long Wedge	1	2	2	4	4
	1B	1" Thick x 9" Sq. Turtle Lock Block/Blox®	1	1		4	4
	2B	2" Thick x 9" Sq. Turtle Lock Block/Blox®	1	1		4	4
	3B	3" Thick x 9" Sq. Turtle Lock Block/Blox®	1	1		4	4
	SC-1	Standard Step Chock	2	2	4	4	4
	WC-2	Pair of Wheel Chocks	1	2	4	4	4
	CTP1818-1.5	18"x18"x1 1/2" Mod Pad® w/Level	1	1	2	2	4
To include bags at an additional cost, use the following Part #:			Auto X Kit A-B	Auto X Kit B-B	Auto X Kit C-B	Auto X Kit D-B	Auto X Kit E-B
	CB	Carrying Bag	1 Bag	2 Bags	4 Bags	4 Bags	4 Bags
	CT	Crib Toter	1 Toter	2 Toters	4 Toters	4 Toters	4 Toters
		Weight (in lbs.)	175	280	702	836	1104

2024 Crib Toter Kits

7400 Industrial Parkway Drive Lorain, OH 44053

(800) 756-6635

orders@turtleplastics.com

Photo	Component	Description	Part # CT44-18	Part # CT44PL-18
	CT	Crib Toter Bag	2	2
	44-18 CRIB	4"x4"x18" Pyramid Crips	18	
	44PL-18 CRIB	4"x4"x18" Hybrid Crips		18
		Weight (in lbs.)	116	110

2024 Basic Stabilization Tool Kits

Photo	Component	Description	Part # QR-2	Part # SA-2	Part # SA-4	Part # BASK 1
	SC-1	Standard Step Chocks	2	2	4	
	3W	3" W x 81/2" Long Wedge	2	2	4	
	1B	1" Thick x 9" Sq. Turtle Lock Block/Blox®	2	2	4	
	2B	2" Thick x 9" Sq. Turtle Lock Block/Blox®	1			
	44PL-18	4"x4"x18" Hybrid Crib®				4
	4/4-20	4"x4"x20" Wedge				4
	WC-2	Pair of Wheel Chocks	1			1
	QR-2 BAG	25"x 15"x16" Carrying Bag	1	1	2	
	BASK BAG	24" x17"x16" Carrying Bag				1
		Weight (in lbs.)	56	39	79	55

2024 Cog Step Chock Kits

Photo	Component	Description	Part # COG Kit A
	SC-COG-1	COG Step Chock	2
	LB-K	Turtle Lock Block/Blox® Kit 1B/2B/3B	3
		Weight (in lbs.)	105

Photo	Component	Description	Part # PMSCK	Part # USAR KIT A-Gen 2	Part # USAR KIT B-Gen 2
	44PL-18	4"x4"x18" Hybrid Crib®		27	36
	4/4-20	4"x4"x20" Wedge		12	12
	24-18 CRIB	2"x4"x18" Pyramid Crib®		12	12
	2/4-12	2"x4"x12" Wedge		12	12
	6W	6" W x 81/2" Long Wedge	2		
	WC-2	Pair of Wheel Chocks		1	2
	SC-1	Standard Step Chock	2		4
	CTP1818-1.5	18"x18"x11/2" Mod Pad® w/Level			2
	67SC-24	6"x7"x24" Super Crib®			9
	6/7-24	6"x7"x24" Super Wedge			2
	44-SHC-BLK	4"x4"x6" Shoring Crib	2		2
	LB-K	Lock Block/Blox® Kit 1B/2B/3B			1
To include bags at an additional cost, use the following Part #:				USAR Kit A Gen 2B	USAR Kit B Gen 2B
	CB	Carrying Bag		1 Bag	2 Bags
	CT	Crib Toters		3 Toters	4 Toters
		Weight (in lbs.)	95	295	782

***Heavy Duty FEMA/USAR Kits can be created utilizing the Full Slabs, Half Slabs, Prime Cribs, and UHMW Protection Pads. Please call us to help you customize your kit.

2024 Fleet Maintenance Starter Kit

7400 Industrial Parkway Drive Lorain, OH 44053

(800) 756-6635

orders@turtleplastics.com

TRAINING PROGRAM

Did you know that we offer product training? Turtle Plastics® has worked with rescue trainers to develop practical, first responder cribbing and kits that are portable and combine stabilization components for auto extrication maneuvers. Our Dura Crib® brand products are "Rescue Ready" and fit most engine compartments. We have dozens of products to choose from or we have preconfigured kits with our most popular products.

To thank you for your interest in our products, we would like to extend a complimentary lunch and learn training program on our products for departments who can register 15 or more firefighters for a class.

Please call Dennis Hildebrandt at 1-800-756-6635 extension 205 to schedule your training.



Member of:



Photo	Component	Description	Quantity
	FSS-4X4X48	4"x4"x48" -True Forklift Mast Support	2
	FSS-4X4X22	4"x4"x22" -True Forklift Mast Support	2
	67HDC10	6"x7"x10" Little Black Diamond Crib	2
	WC2Y	Wheel Chock-Double-Yellow	4
	RZ-66-1-10°	6"x6"x36" 10° Slant Rizer	2
	S612-24	6"x12"x24" The Slab	4
	S612-12	6"x12"x12" Half Slab	4
	67HDC-30	6"x7"x30" Black Diamond Crib	2
	FSS-CLAMP	Forklift Bessey Clamp	2
	CB	Carrying Bag	1
Weight (in lbs.)		559	