



# Standard Hose Bridge &

# Super Hose Bridge

A Dura Stat™ Brand of Products

## Technical and Safety Manual

July 1, 2021



**ATTENTION: ALL DISTRIBUTORS, INSTALLERS AND/OR PURCHASERS OF TURTLE PLASTICS' HOSE BRIDGE PRODUCTS. PLEASE FOLLOW ALL PRODUCT WARNINGS AND INSTRUCTIONS ENCLOSED IN THIS MANUAL.**

**FAILURE TO DO SO POSES RISK OF SERIOUS INJURY OR DEATH TO THE USER AS A RESULT OF SLIPS, TRIPS, FALLS, ENTRAPMENT OR ROLLOVER OF EQUIPMENT.**

**ENSURE THIS NOTICE IS DISTRIBUTED TO ANYONE CURRENTLY USING THESE PRODUCTS OR PRIOR TO ANYONE INSTALLING THESE PRODUCTS.**

Please read safety warnings on the following pages prior to using the below product(s).  
**NOTE:** Products may have been sold under a different name or part number, please check with your distributor.

Mfg. Part #	Product Name and Description
HBS	Standard Hose Bridge Set (trademarked as Hose Jumper™)  4-piece unit
HBS-1/2S	Half Bridge  1-piece unit
HBS-1/2	Half Bridges for Curb Ramps  2-piece unit
HBS-E237-24	Hose Bridge Extender  2-piece unit
HJ	Hose Bridge Joiner  1- piece metal component unit
HBS68	Super Hose Bridge™  6-piece unit
WSHBS	Walking Surface -Standard Hose Bridge Section  Black Turtle Tiles welded and covered with carbide grit coating that is affixed to entire surface of each HBS section.

## I. GENERAL PRODUCT INFORMATION

These products are designed to allow vehicle or pedestrian traffic over hoses in commercial, recreational, and industrial settings. ***"These products are designed to allow vehicle or pedestrian traffic over hoses in commercial, recreational, and industrial settings. The products are not ADA compliant. The products should be used only by the purchaser and should not be rented to a third party."***

**NOTE:** Product working load limits are maximized in a 77-degree Fahrenheit (25-degree Celsius) environment; temperatures above or below will decrease working load limits.

# Standard Hose Bridge and Accessories

## Standard Hose Bridge (Hose Jumper)

### Mfg. Part # HBS

- Four-piece set (2-Left side components, 2-Right side components).
- Protects and organizes up to 3 hoses per ground.
- For utilities (water, electrical, phone), in-plant use (welding cables, electrical conduit, water, steam, hydraulic, air lines), first response, construction sites.
- Creates a temporary safe passage for driving cars, SUV, or small trucks over hoses.
- Openings: accepts 5", 4" and 3" O.D.
- Supports up to 14,000 lbs. per axle.
- May purchase one or two component units for specific applications such as curb abutment.

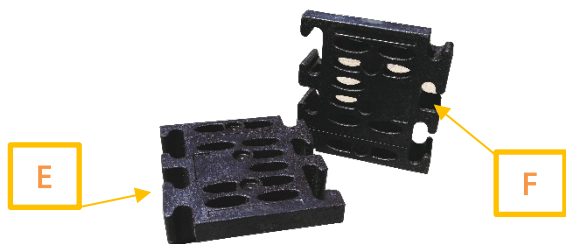


Part #	Product Name	Dimensions Assembled	Wgt. Assembled
HBS	Hose Bridge Set 4-piece unit (A,B,C,D)	4@35"x49"x 6 3/4"	108.86 kg/240 lbs.
HBS-1/2S	Half Bridge 1-piece unit (A)	1@35"x49"x 6 3/4"	27.21 kg/60 lbs.
HBS-1/2	Half Bridges for Curb Ramps 2-piece unit (A,B)	2@ 35"x49"x 6 3/4"	54.42 kg/120 lbs.
WSHBS	Grit Top Walking Surface	Surface area of bridge(s) to be covered.	5.89 kg/13 lbs. per bridge piece
HBS-E237-24	Hose Bridge Extender 2-piece unit	27 9/16" x 23 1/8" x 6 3/4"	27.21 kg/60 lbs.
HJ	Hose Bridge Joiner 1-piece unit		.907 kg/2 lbs.

## Hose Bridge Extender

### Mfg. Part # HBS-E237-24

- Made from 100% recycled plastic.
- Two-piece set used to lengthen the distance between bridge ramps for optimum vehicle clearance.
- Interlocks with Standard or Super Hose Bridge components.
- (U.S. Pat. No. D552,217)

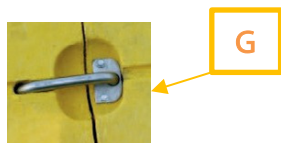


Hose Bridge Extender -HBS-E237-24

## Hose Bridge Joiner

### Mfg. Part # HJ

- Made from heavy gauge stainless steel.
- Can be used on the Standard Hose Bridge when making a wider bridge configuration.
- The device locks the Standard Hose Bridge right and left components pieces in place to one another.
- Use one joiner per left and right bridge component.



Hose Bridge Joiner-HJ



Fig. 5

Walking Surface Hose Bridge Section -WSHBS

## Walking Surface Hose Bridge Section Mfg. Part # WSHBS

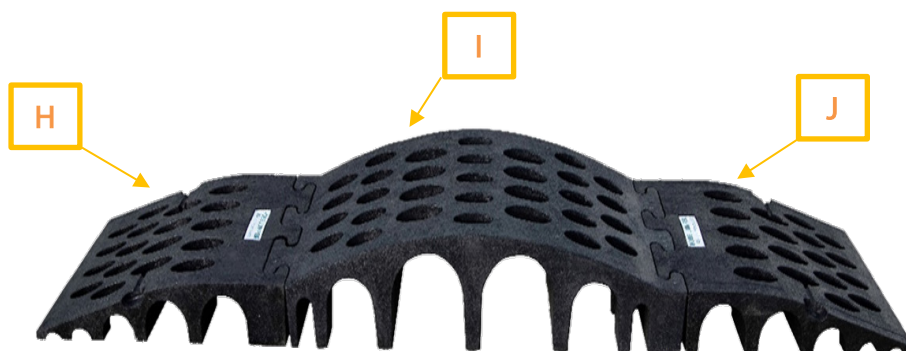
- Black Turtle Tiles made from 100% recycled plastic are coated with a special gray colored carbide grit.
- The coated tile is affixed to Standard Hose Bridge Section at the manufacturer's facility to create for walking surface.
- Yellow safety ramp affixed to walking surface tile for visibility and to reduce trip hazard on and off bridge area.
- The WSHBS is not suitable for wheelchair, bicycle or motorcycle traffic.
- Handrail not sold by Turtle Plastics.

# Super Hose Bridge and Accessories

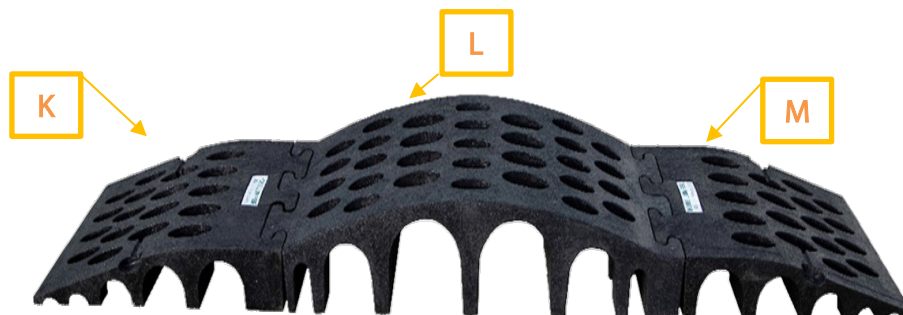
## Super Hose Bridge

### Mfg. Part # HBS68

- Made from 100% recycled plastic.
- Six piece sets 2-Left side components, 2-Center bridge components, 2-Right side components).
- Creates a temporary safe passage for driving vehicles or trucks over larger laid hoses.
- Larger hose openings than the Standard Hose Bridge.
- Openings: accepts 6", 8" and 10" O.D.
- Wide ramps for easier access.
- Available with yellow reflective striping and side reflectors.
- Useful for roadways, parking lots, paved highways.
- Pieces interlock with one another.
- 14,000 lbs. per axle load capacity.



Super Hose Bridge -HBS68  
All 6 components H,I,J,K,L,M



Part #	Product Name	Dimension Assembled	Wgt. Assembled
HBS68	Super Hose Bridge	126" x 24½" x 12¼"	244.94 kg./540 lbs.

## Hose Bridge Extender (see components E,F on page 2)

### Mfg. Part # HBS-E237-24

- Use two (2) HBS-E237-24 to create a 4-piece set.
- Designed to lengthen the distance between ramps and bridge for optimum vehicle clearance (See Figure 4).

## II. GENERAL INSTRUCTIONS

- Before using any of the products, familiarize yourself with applicable government regulations/ordinances and your organization's policies and procedures for use of the products.
- Review, understand, and follow all assembly and safety instructions set forth in this manual when assembling and using any of the products.
- Make sure the environment in which the product(s) will be used is safe.
- Only trained personnel should assemble the product components.
- Inspect product for any damage prior to use; do not use if damaged.
- Ensure products are dry before use.
- Secure products to the ground surface whenever possible.
- Products are intended for temporary use only.
- Replace products if worn, damaged, or dirty.

#### IV. STANDARD HOSE BRIDGE PRODUCT ASSEMBLY INSTRUCTIONS

##### Fig. 1 Standard Hose Bridge

Included in a Standard Hose Bridge Set (HBS) are four (4) components A,B,C,D (not marked). When assembled, the components will create two (2) separate Standard Hose Bridges. Each component has a self interlocking jigsaw design and the other side is the straight edge ramp. Connect component A to component B via the interlocking jigsaw side. Connect component C to component D via the interlocking jigsaw side. Place one completed Standard Hose Bridge (A&B) parallel to the other completed Standard Hose Bridge (C&D). Refer to federal, state, local regulations to determine spacing between Standard Hose Bridge 1 and 2.

##### Fig. 1A Standard Hose Bridge with Hose Bridge Joiner – For Wide Tire Configuration

After assembly of Fig. 1, use one (1) Hose Joiner per section to affix Standard Hose Bridge 1 to Standard Hose Bridge 2. Do not affix more than 14,000 pounds per axle total weight of all assembled Hose Bridges. Make sure self interlocking sides are secured to each other prior to placing Standard Hose Bridge into action. **Do not use this configuration for walking or pedestrian traffic.**

##### Fig. 2 Standard Hose Bridge with Hose Bridge Extender – To Accommodate Low Clearance Vehicle. **Do not use this configuration for walking or pedestrian traffic.**

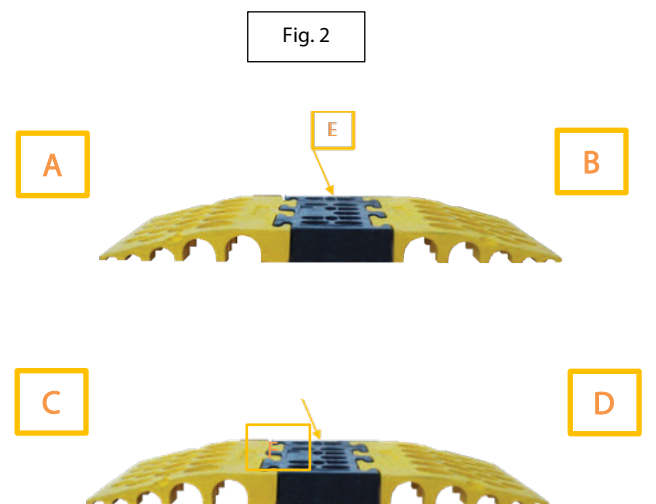
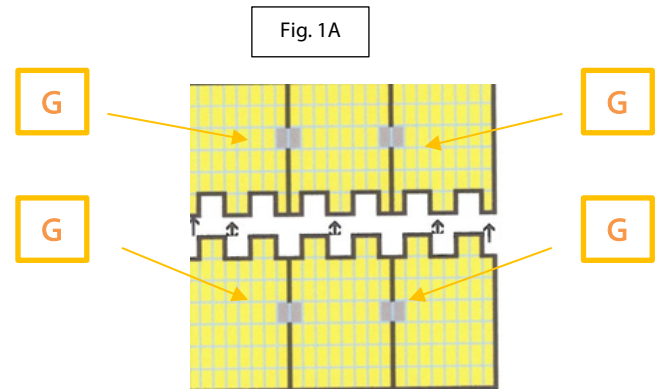
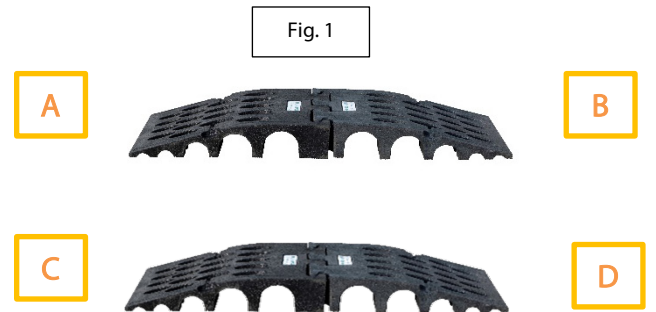
Requires one Standard Hose Bridge Set (HBS-E237-24) with all four (4) components A,B,C,D (not marked). Sold separately are Hose Bridge Extenders ( HBS-E237-24) that contain two (2) extender pieces (E&F) (not marked on components).

Assemble self interlocking jigsaw side of component A to end of component E. Secure self interlocking jigsaw side of component B to the other end of E.

Assemble self interlocking jigsaw side of component C to end of component F. Secure self interlocking jigsaw side of component D to the other end of F.

Completely assembled components will create two (2) separate Standard Hose Bridges. Place one completed Standard Hose Bridge (A,E,B) parallel to the other completed Standard Hose Bridge (C,F,D). Refer to federal, state, local regulations to determine spacing between Standard Hose Bridge 1 and 2.

The components are designed with jigsaw like ends that will self interlock to help secure each component to another. We recommend using the additional circular corner areas on the façade of each component to secure Hose Bridge to the ground. Ground stakes not included or sold by Turtle Plastics.





### Fig. 3 Super Hose Bridge Set

Attach component H jigsaw side to either end of component I – ensure the ends of H component is situated securely in place with ends of I component. Next attach jigsaw end of component J to the other end of component I. Ensure the ends of I component is situated securely in place with ends of J component.

Attach component K jigsaw side to either end of component L – ensure the ends of K component is situated securely in place with ends of L component. Next attach jigsaw end of component M to the other end of component L. Ensure the ends of M component is situated securely in place with ends of L component.

When assembled, the components will create two (2) separate Super Hose Bridges. Place one completed Super Hose Bridge (H,I,J) parallel to the other completed Super Hose Bridge (K,L,M). Refer to federal, state, local regulations to determine spacing between each Super Hose Bridge. **Do not use this configuration for walking or pedestrian traffic.**

### Fig.4 Super Hose Bridge with Hose Bridge Extenders – To Accommodate Low Clearance Vehicles or Longer Vehicles

Requires one Super Hose Bridge Set (HBS68) with all six (6) components H-Left Bridge, I-Center Bridge, J-Right Bridge, K-Left Bridge, L-Center Bridge, M-Right Bridge (not marked on product). Additionally, sold separately are Hose Bridge Extenders (HBS-E237-24) that contain two (2) extender pieces (E&F) (not marked on components). Please order two (2) sets of extenders (a total of four (4) units depicted as E,E-2,F,F-2 in Fig. 4) to accommodate both ends of each Super Hose Bridge.

Using jigsaw sides of each component, assemble component H to end of component E. Attach E to end of component I. Attach component F to end of component J. Ensure each component is situated securely in place with the other components via the interlocking jigsaw ends. Assemble component K to end of component E-2. Attach E-2 to end of component L. Attach component F-2 to end of component M. Ensure each component is situated securely in place with the other components via the interlocking jigsaw ends.

Completely assembled components will create two (2) separate Super Hose Bridges with Extenders. Place one completed Super Hose Bridge with Extenders (H,E,I,F,J) parallel with (K,E-2,L,F-2,M). Refer to federal, state, local regulations to determine spacing between each Super Hose Bridge with Hose Bridge Extender. **Do not use this configuration for walking or pedestrian traffic.**

Included in a Super Hose Bridge Set (HBS68) are six (6) components H-Left Bridge, I-Center Bridge, J-Right Bridge, K-Left Bridge, L-Center Bridge, M-Right Bridge (not marked on components). The components are designed with jigsaw like ends that will self interlock to help secure each component to another. We recommend using the additional circular corner areas on the façade of each component to secure Hose Bridge to the ground. Ground stakes not included or sold by Turtle Plastics.

Fig. 3

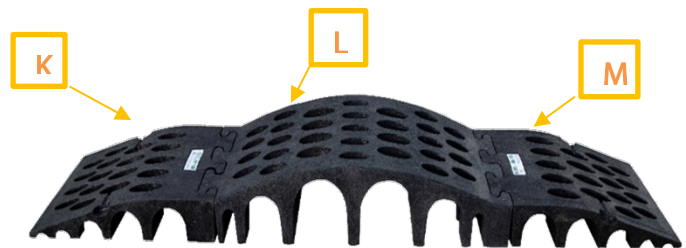
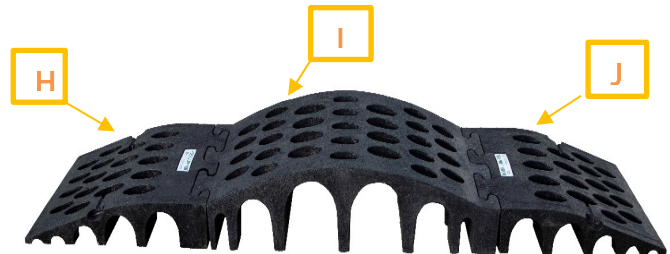
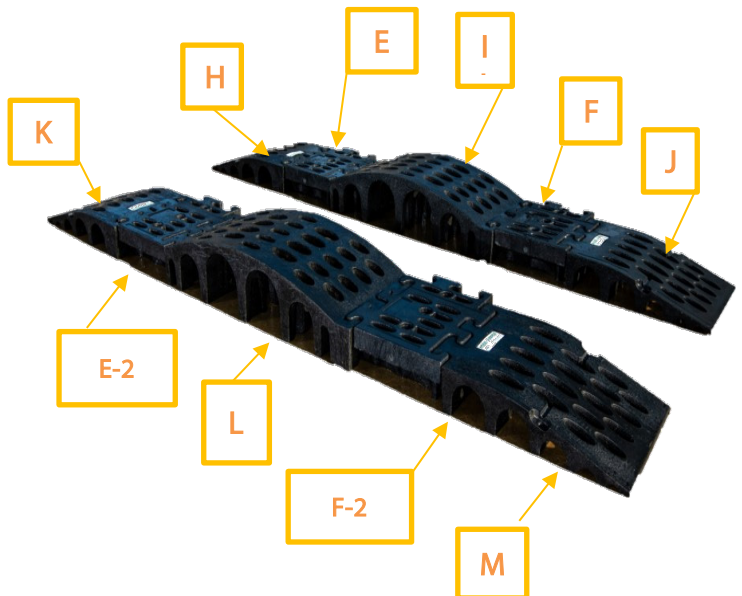


Fig. 4



## V. SAFETY INSTRUCTIONS



- Assemble Super Hose Bridge and Standard Hose Bridge to accept a left and right front tire at the regulated width required by ordinance if motor vehicles will be passing over the products.
- Only use Standard Hose Bridges for pedestrian traffic and only if a Grit Top Walking Surface is installed, is securely affixed to each hose bridge section and has enough carbide grit coating on the Turtle Tile (See Figure 5 on page 2) .
- Use a handrail system alongside any Standard Hose Bridges that are to be used for pedestrian traffic (See example Figure 5 on page 2).
- Do not combine multiple Standard Hose Bridges for pedestrian traffic.
- Use a Hose Bridge Extender to lengthen the available clearance area for low clearance or longer vehicles.
- Do not use a Standard Hose Bridge with the extender piece for any pedestrian traffic.
- Do not combine multiple Super Hose Bridges.
- Do not use a Super Hose Bridge for pedestrian traffic.
- These products are not ADA compliant.



## VI. WARNINGS

 <b>WARNING</b>	
	<p><b>CRASH HAZARD</b></p> <p><b>Small wheels and tires can get stuck, causing serious injury or death</b></p> <p>DO NOT USE FOR WHEELCHAIR, STROLLER, BICYCLE, SCOOTER, ROLLER SKATE, OR SKATEBOARD TRAFFIC</p> <p>DO NOT USE HOSE BRIDGE EXTENDERS WHEN COMBINING MULTIPLE SAME-SIZE HOSE BRIDGES</p>

 <b>WARNING</b>	
	<p><b>ROLLOVER HAZARD</b></p> <p><b>Can cause serious injury or death</b></p> <ul style="list-style-type: none"><li>• USE ONLY ON LEVEL GROUND</li><li>• DO NOT COMBINE BRIDGES OF DIFFERENT SIZES</li><li>• USE HOSE BRIDGE JOINER WHEN COMBINING SAME SIZE HOSE BRIDGES</li><li>• MAKE SURE VEHICLES KEEP WHEELS CENTERED OVER RAMPS.</li><li>• DO NOT DRIVE OVER 2 MPH</li></ul>

## **VI. PROPERTY DAMAGE AVOIDANCE INSTRUCTIONS**

- Do not leave products unattended while in use.
- Do not combine multiple Super Hose Bridges.
- Do not exceed 14,000 lbs. per axle when driving vehicles over Standard or Super Hose Bridge products.
- Do not use liquids to clean the Grit Top Walking Surface.
- Do not clean products with any product other than a cleaning solution from EPA List N for plastic.
- Do not replace damaged components with components other than those made by Turtle Plastics.

## **VII. TURTLE PLASTICS® LIMITED WARRANTY - AMENDED JULY 1, 2021**

### **DURA CRIB™ BRAND PRODUCTS**

1. Cleveland Reclaim Industries Inc. dba Turtle Plastics (hereinafter "Company") warrants solely to the original purchaser at retail of its Dura Crib Products (hereinafter "Product") that:
  - A. For five (5) years from the date of the original purchase at retail, Company will provide a replacement Product for any Product that breaks for any reason other than abuse or damage due to misapplication or improper installation or stabilization maneuver.
  - B. For ten (10) years from the date of the original purchase at retail, Company will provide a replacement on any Product that is sagging for any reason other than damage due to misapplication, overloading of product or improper installation.
  - C. For fifty (50) years from the date of the original purchase at retail, Company will provide a replacement Product for any Product that becomes defective because of rot, termite infestation or corrosion.
2. A Product shall be deemed broken or defective when it lacks the capacity to perform the primary function for which it was manufactured as determined by Company.
3. The lanyard and plug do not carry any warranty provision.
4. Company shall not warrant any Product whose production identification label is altered, including changing the Company's name, logo, product working load, country of origin, phone number and technical information website link. Company will replace any missing or lost product identification found on Product free of charge.
5. TO OBTAIN PERFORMANCE UNDER THIS WARRANTY, the original purchaser at retail must submit and complete online the requisite claim form found on the Company's website. Once a claim form has been submitted along with the necessary supporting documentation, the original purchaser shall receive a Return Goods Authorization number. Once a number has been generated, please return the broken or defective Product to Company postage paid, with a copy of the invoice documenting the date of purchase. Any Product returned for replacement under this warranty must be clearly marked with a "warranty return authorization code", which the original purchaser at retail may obtain from Company. Company will ship a replacement Product to the original purchaser at retail, postage due, within ten (10) days or as soon as product becomes available of receiving the broken or defective Product. Company reserves the right to

challenge any warranty claim for failures resulting from obvious abuse or damage due to misapplication or improper installation.

6. ANY EXPRESS WARRANTY NOT PROVIDED HEREIN, AND ANY REMEDY FOR BREACH OF CONTRACT WHICH BUT FOR THIS PROVISION MIGHT ARISE BY IMPLICATION OF OPERATION OF LAW, IS HEREBY EXCLUDED AND DISCLAIMED. THIS SALE IS MADE ON THE EXPRESS UNDERSTANDING THAT THERE IS NO IMPLIED WARRANTY THAT ANY PRODUCT SHALL BE FIT FOR ANY PARTICULAR PURPOSE OR AN IMPLIED WARRANTY THAT ANY GOODS SHALL BE MERCHANTABLE. THE ORIGINAL PURCHASER AT RETAIL ACKNOWLEDGES THAT SAID PURCHASER IS NOT RELYING ON COMPANY'S SKILL AND JUDGEMENT TO SELECT OR FURNISH GOODS SUITABLE FOR ANY PARTICULAR USE.
7. UNDER NO CIRCUMSTANCES SHALL COMPANY BE LIABLE TO THE ORIGINAL PURCHASER AT RETAIL OR ANY OTHER PERSON FOR ANY SPECIAL OR CONSEQUENTIAL DAMAGES, WHETHER ARISING OUT OF BREACH OF WARRANTY, BREACH OF CONTRACT, OR OTHERWISE. COMPANY SHALL IN NO EVENT BE LIABLE FOR ANY BREACH OF WARRANTY IN AN AMOUNT EXCEEDING THE ORIGINAL PURCHASE PRICE OF ANY PRODUCT.
8. COMPANY SHALL IN NO EVENT BE BOUND BY ANY STATEMENT OR REPRESENTATION AS TO THE QUALITY OR PERFORMANCE OF ANY PRODUCT, OTHER THAN AS CONTAINED IN THIS WARRANTY.
9. PRODUCTS PROVIDED AS SAMPLES OR AT NO CHARGE ARE NOT CONSIDERED WARRANTED AND MAY NOT BE RETURNED FOR ANY CASH VALUE OR REPLACEMENT.
10. COMPANY RESERVES THE RIGHT, AT ITS DISCRETION, TO CHANGE, MODIFY, ADD, OR REMOVE PORTIONS OF THE WARRANTY AT ANY TIME BY POSTING THE AMENDED WARRANTY ON ITS WEBSITE AT [HTTPS://WWW.TURTLEPLASTICS.COM/RESOURCES/](https://www.turtleplastics.com/resources/). PLEASE CHECK WARRANTY PERIODICALLY FOR CHANGES OR CALL OUR OFFICE AT 1-800-756-6635 IF YOU WOULD LIKE THE MOST RECENT WARRANTY.
11. WARNING: COMPANY STRONGLY RECOMMENDS THAT GENUINE DURA CRIB PRODUCTS ARE USED DURING CRIBBING APPLICATIONS AND THE USE OR MIXING OF OTHER PRODUCTS OR MATERIALS IN A CRIB STACK MAY ALTER THE PERFORMANCE OF THE COMPANY'S PRODUCTS, CAUSE SERIOUS INJURY TO THE USER, DAMAGE TO THE EQUIPMENT AND CANCEL THE LIMITED WARRANTY PROVIDED HEREIN.

**DURA STAT™/DURA BLEND LUMBER™/UHMW BRAND PRODUCTS  
(THIS INCLUDES ALL HOSE BRIDGE PRODUCTS)**

1. Cleveland Reclaim Industries Inc. dba Turtle Plastics (hereinafter "Company") warrants solely to the original purchaser at retail of its Dura Stat ("DS Product")/Dura Blend Lumber ("DBL Product") and Ultra High Molecular Weight Polyethylene (hereinafter "UHMW Product") that:
  - A. For one (1) year from the date of the original purchase at retail, Company will provide a replacement for DS, DBL OR UHMW Products that breaks for any reason other than abuse or damage due to misapplication or improper installation.
  - B. For fifty (50) years from the date of the original purchase at retail, Company will provide a replacement DS, DBL OR UHMW Products that becomes defective because of rot, termite infestation or corrosion.
  - C. Included are warranty provisions 2-11.
2. WARNING: THE LIMITED WARRANTY PROVIDED FOR HEREIN WILL BE CANCELED SHOULD THE ORIGINAL PURCHASER USE DS OR DBL PRODUCTS IN ANY CRIBBING OR MULTIPLE STACKING CONFIGURATION.

# **TURTLE PLASTICS®**

7400 Industrial Parkway Drive

Lorain, OH 44053

PH: 800-756-6635 or 440-282-8008 | Fax: 800-437-1603 or 440-282-8822

[www.turtleplastics.com](http://www.turtleplastics.com) | [orders@turtleplastics.com](mailto:orders@turtleplastics.com)