



# **TURTLE PLASTICS®**

**Safety & Stabilization Product Solutions**

## **2020 FIRE/RESCUE SAFETY PRODUCTS LINE CARD**

### **OUR MOST POPULAR PRODUCTS**

#### **Crib Toter Kit**

Mfg. Part # CT44PL-18

Keeps the Hybrid cribbing blocks organized and easier to carry. Blocks and toter bags are washable and ergonomically designed. Ideal for storage in compact spaces.



(18) 44PL-18 Hybrid Cribbs  
(2) Nylon Toter Bags

- Working Load of Each 44PL-18 Cribbing Block = 20,500kg/45,194lbs



#### **Quick Response Kit**

Mfg. Part # QR-2

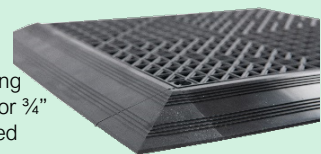
Basic, rapid response stabilization tool kit for first responders. Can be stored in trunk, pickup truck or fire apparatus. All components are made from recycled plastic, washable, can be decontaminated and fit neatly inside the carrying bag.

- (2) SC-1 Standard Step Chock
- (2) 3W Stepped Wedge
- (2) 1B Turtle Lock Block
- (1) 2B Turtle Lock Block
- (1) WC-2 Double Wheel Chock
- (1) Carrying Bag 25" x 15" x 16"

#### **Turtle Tile® and Ramps**

Mfg. Part # 1212 / AF or AM

- The original 12"x12" interlocking modular tile that is offered 1/2" or 3/4" and are made of 100% recycled PVC.
- 3/4" tile available in 15 colors and provides maximum drainage, allowing air circulation to keep equipment, floors, and tiles dry.
- Resistant to many industrial chemicals.
- 1/2" black or red tile used for compartment lining in smaller or thinner profile apparatus cabinet.
- Hygienic, ergonomic and odor-free.
- Tiles are washable and can be decontaminated.



Turtle Plastics®  
7400 Industrial Parkway Drive  
Lorain, OH 44053  
(p) 1-800-756-6635  
(f) 1-800-437-1603  
(e) [info@turtleplastics.com](mailto:info@turtleplastics.com)  
[www.turtleplastics.com](http://www.turtleplastics.com)

For over 40 years, we have been manufacturing sustainable, engineered plastic safety products that are load rated, OSHA compliant, washable and ergonomically designed. Trusted by apparatus and rescue tool manufacturers as well as fire trainers and rescue departments worldwide.

ALL TURTLE PLASTICS PRODUCTS  
**MADE IN USA**

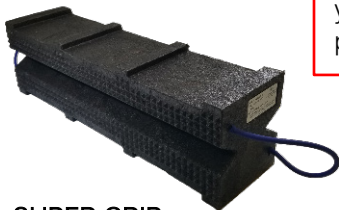




### HYBRID CRIB

Mfg. Part # 44PL-18

- Dimensions: 4"x4"x18"
- A versatile light duty plastic cribbing block designed with two working faces, either pyramid sides or "Lincoln Log" for rapid stacking of smaller to mid-sized surface areas such as cars and small equipment.
- Available as a kit.
- Working Load: 20,500kg/45,194lbs



### SUPER CRIB

Mfg. Part # 67SC-24

- Dimensions: 6"x7"x24"
- A versatile medium duty plastic cribbing block designed with two working faces, either pyramid sides or "Lincoln Log" for rapid stacking of mid-sized surface areas such as trucks, buses and small equipment.
- Extra length makes this the ideal crib for creating a solid base for a crib stack.
- Working Load: 49,900kg/110,000lbs

### 24" MOD PAD

Mfg. Part # CTP2424-2W/L or

### 18" MOD PAD

Mfg. Part # CTP1818-1W/L



- Two sizes: 24" x 24" x 2" or 18" x 18" x 1.5"
- Multi-use interlocking stabilizing plate for top and bottom when using Super Crib or smaller Hybrid Crib stack.
- Use under an air lifting bag to protect and stabilize.
- Built-in level and lanyard handles.
- U.S. Pat. No. D804,768.
- Working Load:  
CTP2424 = 102,058kg/225,000lbs  
CTP1818 = 54,431kg/120,000lbs



### A Safer and Cleaner Alternative to Wood.

*Why put dirty wood back onto your apparatus?*

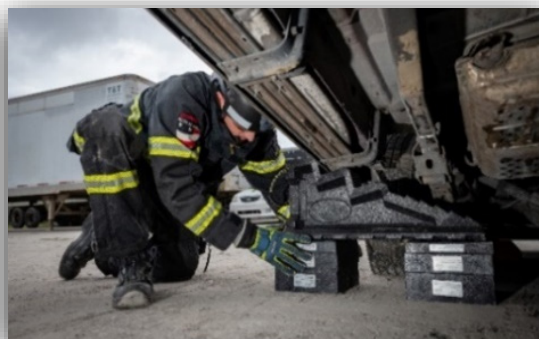
All Turtle Plastics' products are ergonomically designed, **washable**, can be **decontaminated** and are made in the USA from quality recycled plastic that is odor free. All Dura Crib interlocking blocks are load rated. Year over year reliable and repeatable performance of the products makes them economical over replacing wood.



### LOCK BLOCKS

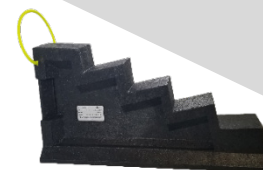
Mfg. Part # 1B, 2B or 3B

- Dimensions: 9"x9" x 1", 2" or 3"
- Versatile blocks for many applications, use as platform for various small height requirements under a vehicle or use with a step chock for additional lift.
- Sold individually or as a set.
- Working Load: 1,000kg/68,343lbs



### Engine Kits

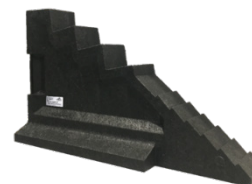
There are many available configurations of Dura Crib/Dura Stat brand products in ready-made kits that are portable and ready for deployment. All Auto X Kits, COG Kits and USAR Kits include a bonus item(s). Call us for more details. Shown: **AUTO X KIT B w/ bag**  
Mfg. Part # Auto X Tool Kit B w/ bag



### SC-1 STANDARD STEP CHOCK

Mfg. Part # SC-1

- Dimensions: Base-24 1/2"x 5 3/4", W-3 3/4" x H-10 3/4"
- The fastest way to stabilize and to ensure stability.
- Work faster against the golden hour.
- Working Load: 2,600kg/5,732lbs



### SC-2 MEDIUM STEP CHOCK

Mfg. Part # SC-2

- Dimensions: Base-29 1/2"x 9", W-4 1/2" x H-17 1/4"
- Quickly stabilize trucks and SUV's.
- Stable footprint.
- Built-in hand hold.
- Working Load: 4,400kg/9,700lbs



### COG STEPCHOCK

Mfg. Part # SC-COG-1

- Wedge and incline lock together for maximum stability.
- Flip and it's a standard step chock - quick set up and leveling.
- Compatible with Turtle Lock Block to increase base lift.
- Working Load:  
Chock 1,701kg/ With Cog 2,722kg  
Chock 3,750lbs/ With Cog 6,000lbs



### STANDARD WEDGE - SMOOTH PROFILE

Mfg. Part # 2/4-12, 4/4-20 or 6/7-24



### PYRAMID FACE WEDGE

Mfg. Part # 4/4-PDU-18 or 6/7-PDU-24



### STEPPED WEDGE

Mfg. Part # 3W, 6W, 12W or 24W