

IBS Kit Content

Reference Information



Please read and save this booklet

Important Safety Information

Before using any of the Turtle Plastics IBS Kits, carefully read, understand and follow instructions and safety messages on equipment, owner's manual, and in this booklet. This booklet cannot anticipate or provide advice and cautions for all situations encountered by repair personnel.

IMPORTANT! Failure to follow the instructions, cautions and warning provided here as well as those provided by the equipment manufacturer may result in serious personal injury or death.

In addition to the information listed below, additional warnings and cautions are listed throughout this booklet. Please read and follow them carefully.

Please refer to your owner's manual regarding proper blocking/cribbing techniques for your equipment.

- The IBS Kit components are intended to be used by *trained* repair personnel only.
- The IBS Kits contain specialty true 4" x 4" (Part #FSS-4x4x22 and Part #FSS-4x4x48) smooth profile Dura Stat™ blocks that have been *tested on the vertical* to withstand a working load of **3,880 pounds** for forklift mast parts matching that weight or less. *The specialty 4" x 4" Dura Stat in any kit is designed specifically to place vertically within the channels of the mast of a forklift.*
- Please *do not* stack or combine Part #FSS-4x4x22 or Part #FSS-4x4x48 with any other materials.
- Do not point source load any Turtle Plastics product component.
- Do not exceed maximum load ratings.
- Please be aware that all working load limits (WLL) are maximized in a 77°F/ 25°C environment. Temperatures above and below the maximum recommendation will decrease the WLL.
- Never use overhead chains, floor jacks, or another forklift truck as a main support of equipment.
- Always be aware of stability when changing the center of gravity of your equipment.
- Always be aware of the excess duration of time that equipment is subjected to lifting.

Before beginning any work, make sure the environment is safe.

- Inspect all kit components for cracks, splits, warping, and chemical damage every time before use. Do not use component if any damage is detected. Only replace damaged components with genuine Turtle Plastics components by contacting Turtle Plastics or your distributor.
- Refer to your owner's manual for proper lockout - tagout procedures for your equipment.
- When applicable, make sure to apply the equipment's braking mechanism.
- When applicable, chock the equipment's wheels with the wheel chocks included in your kit.
- Always conduct repairs and maintenance in a well lit environment.
- Always wear the appropriate personal protective equipment when working on your equipment.
- Make sure your work surface is level, solid, and stable.

Kit Contents

The following are the contents for Kit Mfg. Part # IBS-R. Your kit may include additional or different components not shown here. Please see the chart on the next page for additional Dura Crib products' WLL.



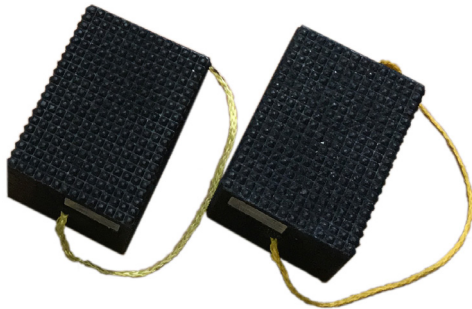
(1) Carrying Bag
Mfg. Part #FSSK



(2) WC1 Yellow Wheel Chocks
Mfg. Part #WC1



(2) True 4" x 4" x 48" Dura Stat
Forklift Mast Blocks
Use vertically only.
Mfg. Part #FSS-4x4x48



(2) Little Black Diamond Cribs
WLL 23,700 kg / 52,249 lbs.
Use horizontally only.
May be stacked together.
Mfg. Part # 67HDC-10

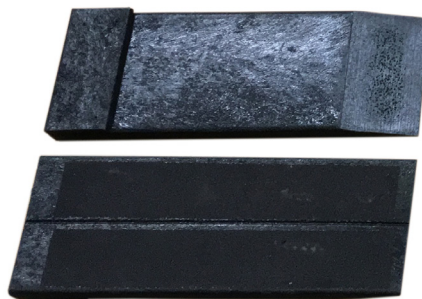


(2) True 4" x 4" x 22" Dura Stat
Inner Rail Channel Blocks
Use vertically only.
Mfg. Part #FSS-4x4x22

*Choice of either (2) Stockpicker Rizers or (2) 2B Turtle Lock Blocks.

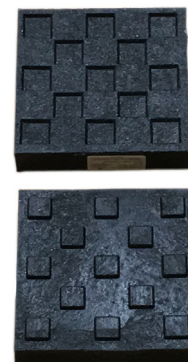


(2) Bessey Clamp
Mfg. Part #FSS-Clamp



(2) RZ17-1-10 Stockpicker Rizers
(*Accessory Parts)
Use horizontally only.
Mfg. Part #RZ17-1-10

OR

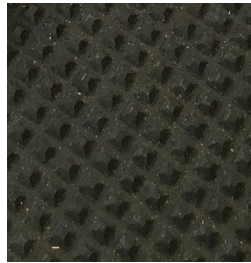


(2) Turtle Lock Blocks
(*Accessory Parts)
WLL 31,000 kg / 68,343 lbs.
Use horizontally only.
May be stacked together.
Mfg. Part #2B

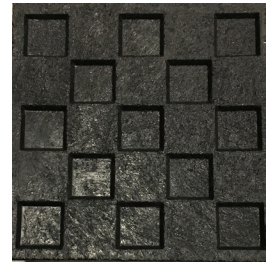
Additional Information

About Dura Crib

Dura Crib is an engineered interlocking composite plastic cribbing with raised pyramid or blocking profiles designed for multiple layer applications.



Pyramid Profile



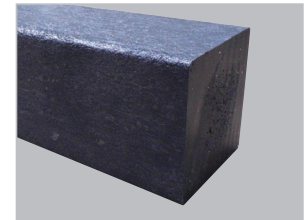
Block Profile

About Dura Stat

Dura Stat is an engineered smooth surface composite block.

The specialty 4" x 4" Dura Stat blocks in this kit are designed specifically to place **vertically** within the channels of the mast of a forklift.


The stockpicker rizers and wheel chocks are also a part of the Dura Stat brand. *Please note: they are not load rated, are only to be used horizontally, and are not to be used stacked together.*




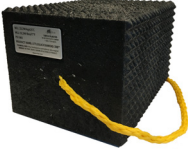
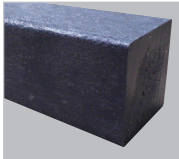


Specialty 4" x 4" Dura Stat Block

Working Load Limits—Based On a Single Dura Crib Block

Always refer to the owner’s manual for proper cribbing/blocking techniques when raising a forklift.


WARNING

- Do not point source load plastic blocks or cribbing.
- Do not exceed maximum load ratings.

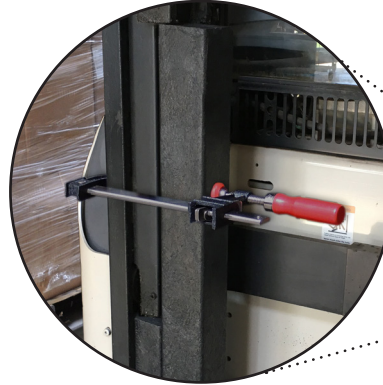
Product Photo					
Mfg. Part #	3B, 2B, 1B	67HDC-10	FSS-4x4x22 FSS-4x4x48	WC1	RZ17-1-10
Product Name	Turtle Lock Block	Little Diamond Crib	Dura Stat Inner Rail Channel Blocks and Forklift Mast Blocks	Wheel Chock	Stockpicker Rizer
WLL (kg)	31,000	23,700	Tested on the vertical to withstand a working load of 3,880 pounds for forklift mast parts matching that weight or less	N/A	N/A
WLL (lbs)	68,343	52,249		N/A	N/A
Strength (PSI)	865	865	850	850	850

Stabilizing Examples

These are examples only. Always refer to the owner's manual for proper cribbing/blocking techniques when raising a forklift.

⚠ WARNINGS

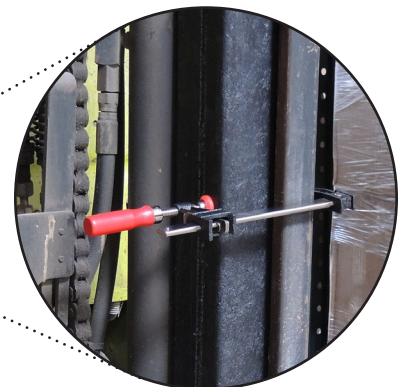
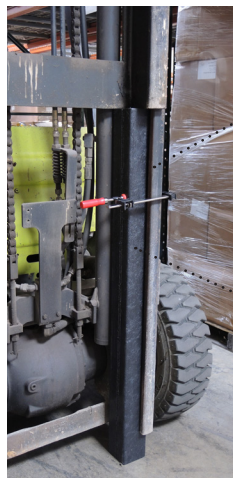
- To avoid shifting the center of gravity and flipping the forklift truck, **always** support **both** sides of the mast using the exact same configuration.



Example of mast support using both the 4" x 4" x 22" and 4" x 4" x 48" Dura Stat channel blocks.

⚠ WARNINGS

- **Always** use clamps to reinforce the blocking components and to keep them from moving when lowering the mast.
- When lowering the mast on to the blocking components, do so **slowly**.



Example of mast support using 4" x 4" x 48" Dura Stat channel blocks.



Example of a forklift on a stockpicker rizer.
Note: When driving on to the rizer, do so **slowly**.

⚠ WARNING

- Stockpicker rizers are not load rated and are only to be used horizontally

**Turtle Plastics Limited Warranty
Dura Crib Products
As of December 1, 2018**

1. Cleveland Reclaim Industries Inc. dba Turtle Plastics (hereinafter "Company") warrants to the original purchaser at retail of its Published Products (hereinafter "Product") that:
 - A. For five (5) years from the date of the original purchase at retail, Company will provide a replacement Product for any Product that breaks for any reason other than obvious abuse or damage due to misapplication or improper installation.
 - B. For ten (10) years from the date of the original purchase at retail, Company will provide a replacement on any Product that is sagging for any reason other than damage due to misapplication or improper installation.
 - C. For fifty (50) years from the date of the original purchase at retail, Company will provide a replacement Product for any Product that becomes defective as a result of rot, termite infestation or corrosion.
 - D. A Product shall be deemed broken or defective when it lacks the capacity to perform the primary function for which it was manufactured.
2. TO OBTAIN PERFORMANCE UNDER THIS WARRANTY, the original purchaser at retail must call the Turtle Plastics corporate office listed above to obtain a Return Goods Authorization number. Once a number has been generated, please return the broken or defective Product to Company postage paid, with a copy of the invoice documenting the date of purchase. Any Product returned for replacement under this warranty must be clearly marked with a "warranty return authorization code", which the original purchaser at retail may obtain from Company. Upon receiving the broken or defective Product, Company will ship a replacement Product to the original purchaser at retail, postage due, within ten (10) days or as soon as product becomes available. Company reserves the right to challenge any warranty claim for failures resulting from obvious abuse or damage due to misapplication or improper installation.
3. ANY EXPRESS WARRANTY NOT PROVIDED HEREIN, AND ANY REMEDY FOR BREACH OF CONTRACT WHICH BUT FOR THIS PROVISION MIGHT ARISE BY IMPLICATION OF OPERATION OF LAW, IS HEREBY EXCLUDED AND DISCLAIMED. THIS SALE IS MADE ON THE EXPRESS UNDERSTANDING THAT THERE IS NO IMPLIED WARRANTY THAT ANY PRODUCT SHALL BE FIT FOR ANY PARTICULAR PURPOSE OR AN IMPLIED WARRANTY THAT ANY GOODS SHALL BE MERCHANTABLE. THE ORIGINAL PURCHASER AT RETAIL ACKNOWLEDGES THAT SAID PURCHASER IS NOT RELYING ON COMPANY'S SKILL AND JUDGEMENT TO SELECT OR FURNISH GOODS SUITABLE FOR ANY PARTICULAR USE.
4. UNDER NO CIRCUMSTANCES SHALL COMPANY BE LIABLE TO THE ORIGINAL PURCHASER AT RETAIL OR ANY OTHER PERSON FOR ANY SPECIAL OR CONSEQUENTIAL DAMAGES, WHETHER ARISING OUT OF BREACH OF WARRANTY, BREACH OF CONTRACT, OR OTHERWISE. COMPANY SHALL IN NO EVENT BE LIABLE FOR ANY BREACH OF WARRANTY IN AN AMOUNT EXCEEDING THE PURCHASE PRICE OF ANY PRODUCT.
5. COMPANY SHALL IN NO EVENT BE BOUND BY ANY STATEMENT OR REPRESENTATION AS TO THE QUALITY OR PERFORMANCE OF ANY PRODUCT, OTHER THAN AS CONTAINED IN THIS WARRANTY.

UMHW and Dura Stat Smooth Profile Products

1. Cleveland Reclaim Industries Inc. dba Turtle Plastics (hereinafter "Company") warrants to the original purchaser at retail of its Published Products (hereinafter "Product") that:
 - A. For one (1) year from the date of the original purchase at retail, Company will provide a replacement Product for any standard UMHW or Dura Stat Smooth Profile Product that breaks for any reason other than obvious abuse or damage due to misapplication or improper installation.
 - B. A Product shall be deemed broken or defective when it lacks the capacity to perform the primary function for which it was manufactured.
 - C. As in Items 2-5 above of the Dura Crib warranty provisions.

©2019 Turtle Plastics. All rights reserved.

No portion of this publication may be reproduced or transmitted in any form or by any means, electronic or mechanical, without permission from Turtle Plastics, except as permitted by U.S. copyright law.

Turtle Plastics assumes no responsibility for use of this equipment by untrained or unauthorized persons.



TURTLE PLASTICS®

7400 Industrial Parkway Drive

Lorain, OH 44053

PH: 800-756-6635 or 440-282-8008 | Fax: 800-437-1603 or 440-282-8822

www.turtleplastics.com | orders@turtleplastics.com



IBS010219